



fingerprint fuming chamber series
for cyanoacrylate development of fingerprints
on non-porous surfaces



Features

360 Degree View

Our MEGAfume series is designed with an exoskeleton supporting tempered glass viewing panels. Not only does this make the interior easier to clean, our glass viewing panels and interior lighting give you the best view of your evidence while it develops, to help you get the best results.

Modular Stainless Steel Evidence Racks

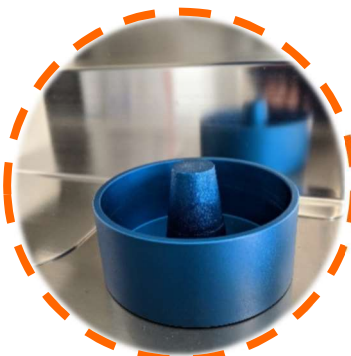
All of the evidence racks and mounting brackets in your MEGAfume can be removed or repositioned without any special tools, making it easy to arrange your evidence and giving you full use of the fuming chamber space. These are all made from stainless steel and sized so they can be put in a laboratory dishwasher.

Removable Reservoir and Circulation Fan

The chamber air baffle, fan, and water reservoir can be removed from the chamber to make cleaning easier. The anodized aluminium reservoir resists cyanoacrylate adhesion and can be quickly emptied and wiped clean.

Multiple Sizes

We have multiple sizes of MEGAfume chambers available, including our benchtop S61 model, the standing M61 model, and our XL61 model for much larger pieces of evidence such as bicycles or laboratories that simply need to fume much larger volumes of evidence at once.



Advanced Control Options

Pre-Programmed and Custom Development Cycles

One-touch cycle options for developers such as cyanoacrylate (liquid or powder, and fluorescent or non-fluorescent versions like Lumicyano from Crime Science Technology) make choosing your development settings easy. Custom cycle options let users modify and save cycles to best suit their needs, depending on the type of evidence they have and developer they are using. All chamber parameters and your cycle progress can be monitored live on-screen.



Innovative Filter Management

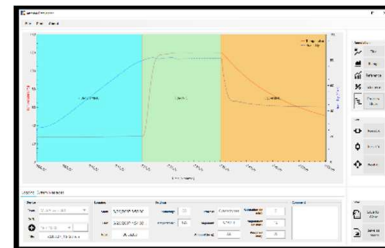
Our new filter management system helps you get the most out of your filter, monitoring what type and how much developer you are using to better guide you on how much filter life you have left. Our system has an on-screen indicator for your remaining filter life, and when the old filter is saturated, it can be replaced in a matter of seconds without any special tools.



Coming Soon: On-screen guides, including guides for routine maintenance tasks like filter changes.

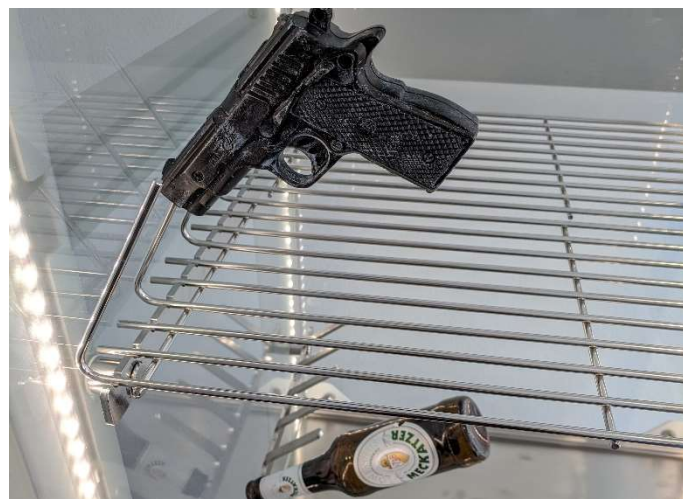
USB Process Data Logger

MEGAfume features a data logger system which records all parameters relevant to a development cycle for quality control and documentation. This data can be downloaded onto a USB and viewed on a PC, or loaded into our report template to create custom reports for department quality control documentation.



PIN-Secured Door Function

The large door makes it easy to load evidence, and is automatically locked by the control system during development processes to prevent accidental opening during a process. In addition, the door can be PIN-secured to prevent unauthorized access to evidence.



Specialized Evidence Racks

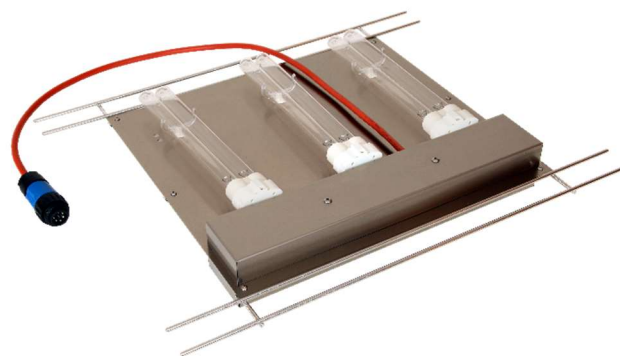
We've developed long-pin racks and brackets made specifically for holding evidence like bottles, cans, and handguns. We also offer specialized support brackets for longer evidence like rifles, bats, and pipes.

Optional Useful MEGAfume Accessories



Starter Development Kit

This kit includes everything you need to start developing prints with your MEGAfume. It includes standard cyanoacrylate developer, developer pans, and a variety of clips and hooks for your evidence.



UV-C Decontamination Unit

This removable UV-C unit connects to your MEGAfume automatically and lets you run UV-C cycles to better help break down biological contamination such as DNA.



Accessory Storage Box

This storage box contains shelving to hold UV-C units, evidence racks, brackets, and rods, as well as other accessories you may have. It is designed to fit perfectly under our larger standing models.

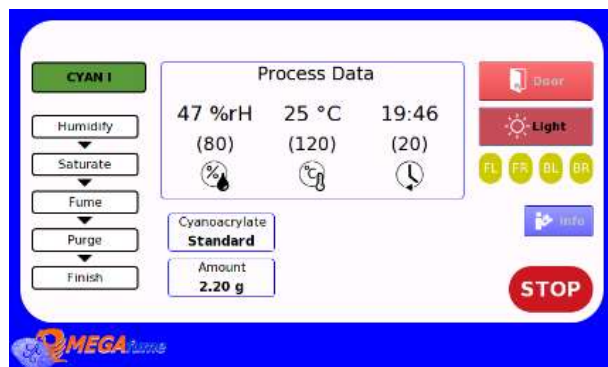


MEGAfume is Attestor's cyanoacrylate fuming chambers series for the development of latent fingerprints on non-porous surfaces such as plastic, glass, metal or similar surfaces. **MEGAfume** models are currently available in three different sizes, our S, M, and XL61 models shown below.

Our fuming chambers have been designed to give you reliable performance, high-quality results, and the most control over your evidence development. Every unit is equipped with our innovative user-friendly control panel. In addition to custom cycle options, our system comes with several pre-programmed customizable cycle options for liquid, powder, fluorescent, and non-fluorescent cyanoacrylate developers. The color display shows you the progress of your evidence development as a cycle runs, and our datalogger records the data for your cycle, including all chamber parameters for quality documentation.

Because our fuming chambers are designed with an exoskeleton and adjustable chamber lighting, the interior chamber space is maximized and gives you a 360-degree view of your evidence as it develops. Removable stainless steel evidence racks and accessories are dishwasher safe and make it easy to clean the chamber interior and decontaminate it.

Our new XL model gives you extra space for larger evidence volumes and larger pieces of evidence, all with the same user-friendly control system and easy to maintain sturdy design.



Technical Data

	MEGAfume S61	MEGAfume M61	MEGAfume XL61
Exterior Dims (HxWxD)	95 x 68 x 75 cm (on height adjustable feet, incl. control display)	195 x 68 x 75 cm (on casters, incl. control display)	207 x 150 x 103 cm (on casters, incl. control display)
Interior Dims (HxWxD)	75 x 58 x 61 cm	125 x 58 x 61 cm	185 x 141 x 70-86 cm
Levels	2	4	6
Volume	264 L	442 L	2044 L
Fuming Temperature	100°C - 230° C		
Humidity Range	60 – 90% RH		
Integrated Illumination	LED illumination (cold light) (one LED stripe along the full height in each corner)		
Air Filter System	Integrated Activated Carbon Filter Cassette (apx. 180 cycles, with standard amount of pure cyanoacrylate)	Integrated Activated Carbon Filter Cassette (apx. 180 cycles, with standard amount of pure cyanoacrylate)	Integrated Activated Carbon Filter Cassette (apx. 140 cycles, with standard amount of pure cyanoacrylate)
Electrical Data			
Voltage:	230V/50Hz AC (ap115V / 60 Hz in preparation)		
Power:	max. 500 W		
Current:	ca. 5 A		

Authorised Reseller:



Made in Germany

Attestor Forensics GmbH
Bad Wurzach

attestor@attestor-forensics.com

www.attestor-forensics.com

This is a product info brochure. Images might not be true to scale. Binding is solely the separately available technical specification. Attestor Forensics GmbH reserves the right to alter the design or specification without prior notice.

